



DEPARTMENT OF THE ARMY
U.S. ARMY CORPS OF ENGINEERS, ST. PAUL DISTRICT
332 MINNESOTA STREET, SUITE E1500
ST. PAUL, MN 55101-1323

MVP-RDP

11 April 2025

MEMORANDUM FOR RECORD

SUBJECT: US Army Corps of Engineers (Corps) Approved Jurisdictional Determination in accordance with the "Revised Definition of 'Waters of the United States'"; (88 FR 3004 (January 18, 2023) as amended by the "Revised Definition of 'Waters of the United States'; Conforming" (8 September 2023) ,¹ MVP-2025-00168-JMK MFR 1 of 1²

BACKGROUND. An Approved Jurisdictional Determination (AJD) is a Corps document stating the presence or absence of waters of the United States on a parcel or a written statement and map identifying the limits of waters of the United States on a parcel. AJDs are clearly designated appealable actions and will include a basis of JD with the document.³ AJDs are case-specific and are typically made in response to a request. AJDs are valid for a period of five years unless new information warrants revision of the determination before the expiration date or a District Engineer has identified, after public notice and comment, that specific geographic areas with rapidly changing environmental conditions merit re-verification on a more frequent basis.⁴

On January 18, 2023, the Environmental Protection Agency (EPA) and the Department of the Army ("the agencies") published the "Revised Definition of 'Waters of the United States,'" 88 FR 3004 (January 18, 2023) ("2023 Rule"). On September 8, 2023, the agencies published the "Revised Definition of 'Waters of the United States'; Conforming", which amended the 2023 Rule to conform to the 2023 Supreme Court decision in *Sackett v. EPA*, 598 U.S., 143 S. Ct. 1322 (2023) ("*Sackett*").

¹ While the Revised Definition of "Waters of the United States"; Conforming had no effect on some categories of waters covered under the CWA, and no effect on any waters covered under RHA, all categories are included in this Memorandum for Record for efficiency.

² When documenting aquatic resources within the review area that are jurisdictional under the Clean Water Act (CWA), use an additional MFR and group the aquatic resources on each MFR based on the TNW, the territorial seas, or interstate water that they are connected to. Be sure to provide an identifier to indicate when there are multiple MFRs associated with a single AJD request (i.e., number them 1, 2, 3, etc.).

³ 33 CFR 331.2.

⁴ Regulatory Guidance Letter 05-02.

MVP

SUBJECT: 2023 Rule, as amended, Approved Jurisdictional Determination in Light of *Sackett v. EPA*, 143 S. Ct. 1322 (2023), [MVP-2025-00168-JMK]

This Memorandum for Record (MFR) constitutes the basis of jurisdiction for a Corps AJD as defined in 33 CFR §331.2. For the purposes of this AJD, we have relied on Section 10 of the Rivers and Harbors Act of 1899 (RHA),⁵ the 2023 Rule as amended, as well as other applicable guidance, relevant case law, and longstanding practice in evaluating jurisdiction.

1. SUMMARY OF CONCLUSIONS.

- a. Provide a list of each individual feature within the review area and the jurisdictional status of each one (i.e., identify whether each feature is/is not a water of the United States and/or a navigable water of the United States).
 - i. W-04, Non-jurisdictional
 - ii. W-07, Non-jurisdictional
 - iii. W-10, Non-jurisdictional
 - iv. W-11, Non-jurisdictional
 - v. W-12, Non-jurisdictional excluded water
 - vi. W-13, Non-jurisdictional excluded water
 - vii. W-14, Non-jurisdictional excluded water

2. REFERENCES.

- a. “Revised Definition of ‘Waters of the United States,’” 88 FR 3004 (January 18, 2023) (“2023 Rule”)
- b. “Revised Definition of ‘Waters of the United States’; Conforming” 88 FR 61964 (September 8, 2023)
- c. *Sackett v. EPA*, 598 U.S. 651, 143 S. Ct. 1322 (2023)

3. REVIEW AREA. The review area for this determination includes 3 non-jurisdictional roadside ditches and 4 non-jurisdictional wetlands, as identified in Section 1(a) of this MFR and on the attached figures. The review area is located along a 7-mile utility corridor between the cities of Mitchell and Lyndon, Sheboygan County, Wisconsin. The approximate coordinates begin at 43.675156 N, -88.088034 W and end at 43.694754 N, -87.963161 W. There are no other JDs associated with the review area.

⁵ USACE has authority under both Section 9 and Section 10 of the Rivers and Harbors Act of 1899 but for convenience, in this MFR, jurisdiction under RHA will be referred to as Section 10.

MVP

SUBJECT: 2023 Rule, as amended, Approved Jurisdictional Determination in Light of *Sackett v. EPA*, 143 S. Ct. 1322 (2023), [MVP-2025-00168-JMK]

4. NEAREST TRADITIONAL NAVIGABLE WATER (TNW), THE TERRITORIAL SEAS, OR INTERSTATE WATER TO WHICH THE AQUATIC RESOURCE IS CONNECTED. N/A.
5. FLOWPATH FROM THE SUBJECT AQUATIC RESOURCES TO A TNW, THE TERRITORIAL SEAS, OR INTERSTATE WATER. N/A.
6. SECTION 10 JURISDICTIONAL WATERS⁶: Describe aquatic resources or other features within the review area determined to be jurisdictional in accordance with Section 10 of the Rivers and Harbors Act of 1899. Include the size of each aquatic resource or other feature within the review area and how it was determined to be jurisdictional in accordance with Section 10.⁷ N/A.
7. SECTION 404 JURISDICTIONAL WATERS: Describe the aquatic resources within the review area that were found to meet the definition of waters of the United States in accordance with the 2023 Rule as amended, consistent with the Supreme Court's decision in *Sackett*. List each aquatic resource separately, by name, consistent with the naming convention used in section 1, above. Include a rationale for each aquatic resource, supporting that the aquatic resource meets the relevant category of "waters of the United States" in the 2023 Rule as amended. The rationale should also include a written description of, or reference to a map in the administrative record that shows, the lateral limits of jurisdiction for each aquatic resource, including how that limit was determined, and incorporate relevant references used. Include the size of each aquatic resource in acres or linear feet and attach and reference related figures as needed.
 - a. Traditional Navigable Waters (TNWs) (a)(1)(i): N/A.
 - b. The Territorial Seas (a)(1)(ii): N/A.
 - c. Interstate Waters (a)(1)(iii): N/A.
 - d. Impoundments (a)(2): N/A.

⁶ 33 CFR 329.9(a) A waterbody which was navigable in its natural or improved state, or which was susceptible of reasonable improvement (as discussed in § 329.8(b) of this part) retains its character as "navigable in law" even though it is not presently used for commerce, or is presently incapable of such use because of changed conditions or the presence of obstructions.

⁷ This MFR is not to be used to make a report of findings to support a determination that the water is a navigable water of the United States. The district must follow the procedures outlined in 33 CFR part 329.14 to make a determination that water is a navigable water of the United States subject to Section 10 of the RHA.

MVP

SUBJECT: 2023 Rule, as amended, Approved Jurisdictional Determination in Light of *Sackett v. EPA*, 143 S. Ct. 1322 (2023), [MVP-2025-00168-JMK]

- e. Tributaries (a)(3): N/A.
- f. Adjacent Wetlands (a)(4): N/A.
- g. Additional Waters (a)(5): N/A.

8. NON-JURISDICTIONAL AQUATIC RESOURCES AND FEATURES

- a. Describe aquatic resources and other features within the review area identified in the 2023 Rule as amended as not “waters of the United States” even where they otherwise meet the terms of paragraphs (a)(2) through (5). Include the type of excluded aquatic resource or feature, the size of the aquatic resource or feature within the review area and describe how it was determined to meet one of the exclusions listed in 33 CFR 328.3(b).⁸
 - Wetland W-12 (0.01 acre), W-13 (0.02 acre), and W-14 (0.04 acre) are roadside ditches constructed in upland and drain only upland based on a review of desktop resources including, US Geological Service 3DEP Hillshade and DEM maps; MNDNR 2-foot contour maps; and NRCS hydric soil data. Recent aerial photos do not show relatively permanent flow in the aforementioned aquatic resources. Based on the delineation and desktop resources reviewed, Wetlands W-12, W-13, and W-14 are roadside ditches constructed in upland, drain only upland, and do not carry a relatively permanent flow of water. Therefore, Wetlands W-12, W-13, and W-14 have been determined to be Paragraph (b)(3) excluded ditches and not subject to Section 404 of the Clean Water Act (CWA).
- b. Describe aquatic resources and features within the review area that were determined to be non-jurisdictional because they do not meet one or more categories of waters of the United States under the 2023 Rule as amended (e.g., tributaries that are non-relatively permanent waters; non-tidal wetlands that do not have a continuous surface connection to a jurisdictional water).
 - Wetland W-04 (0.13 acre), W-07 (0.01 acre), W-10 (0.07 acre), and W-11 (0.32 acre) are not traditionally navigable waters (TNWs), territorial seas, or interstate waters and therefore are not (a)(1) waters. Desktop resources, including recent aerial imagery, indicate these are depressional wetlands surrounded entirely by upland. These wetlands do not physically abut a relatively permanent paragraph (a)(2) impoundment or a jurisdictional (a)(3) tributary. Wetland W-04 is approximately 1-mile from

⁸ 88 FR 3004 (January 18, 2023)

MVP

SUBJECT: 2023 Rule, as amended, Approved Jurisdictional Determination in Light of *Sackett v. EPA*, 143 S. Ct. 1322 (2023), [MVP-2025-00168-JMK]

the nearest tributary, Parnell Creek, located west of the project corridor; Wetland W-07 is approximately 0.2-mile and Wetland W-10 is approximately 1-mile from the nearest tributary, North Branch Milwaukee River, that bisects the middle of the project corridor; and Wetland W-11 is approximately 1-mile from the nearest tributary, Onion River, located north of the project corridor. Wetlands W-04, W-07, W-10, and W-11 are non-tidal wetlands that do not have a continuous surface connection to a relatively permanent jurisdictional water and as such do not meet the definition of adjacent and cannot be evaluated as (a)(4) adjacent wetland; therefore, these wetlands are not jurisdictional under the 2023 Revised Definition of 'Waters of the United States'; Conforming" 88 FR 61964 Final Rule.

9. DATA SOURCES. List sources of data/information used in making determination. Include titles and dates of sources used and ensure that information referenced is available in the administrative record.
 - a. Joint WDNR Utility General Permit and USACE Pre-Construction Notification dated February 5, 2025
 - b. Minnesota Regulatory Viewer: 3DEP Hillshade and DEM layer, MNDNR 2-foot contour layer and NRCS hydric soil data layer.
10. OTHER SUPPORTING INFORMATION. Non-jurisdictional wetlands were evaluated in accordance with the Memorandum to the Field between the U.S. Department of the Army, U.S. Army Corps of Engineers and the U.S. Environmental Protection Agency Concerning the Proper Implementation of "Continuous Surface Connection" under the Definition of "Waters of the United States" under the Clean Water Act (Mar. 12, 2025), <https://www.epa.gov/wotus/current-implementationwaters-united-states>.
11. NOTE: The structure and format of this MFR were developed in coordination with the EPA and Department of the Army. The MFR's structure and format may be subject to future modification or may be rescinded as needed to implement additional guidance from the agencies; however, the approved jurisdictional determination described herein is a final agency action.

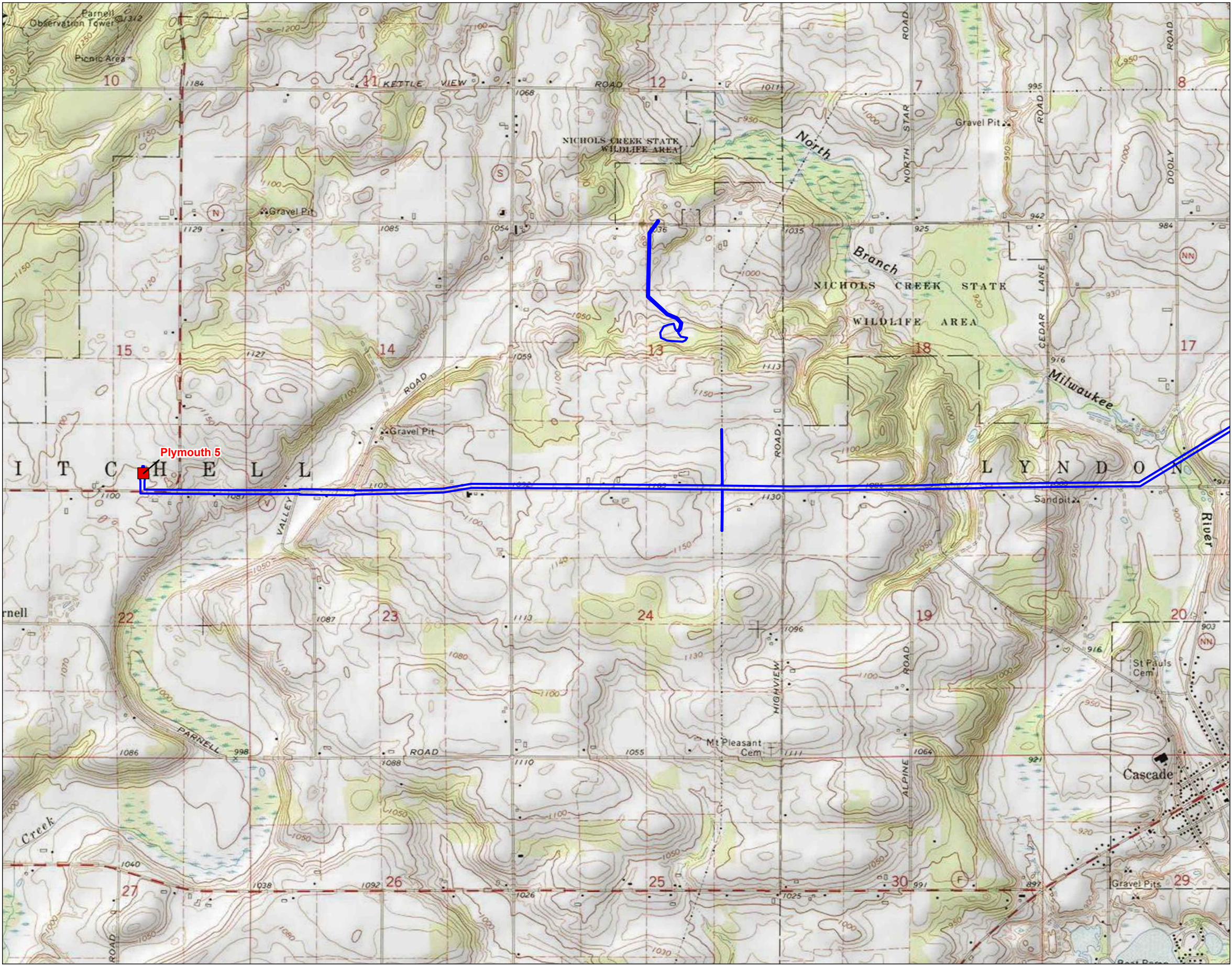


Figure No. **1**

Title
Project Location and Topography

Client/Project
ATC
Plymouth Reliability Project

193710511

Project Location
T15N, R21E; T14N, R20E; & T14N, R21E
T. of Lyndon, Mitchell, & Plymouth, Sheboygan Co., WI

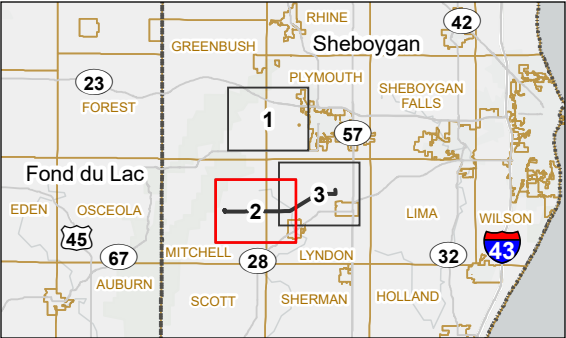
Prepared by MNK on 2025-01-23
TR by AJC on 2025-01-16
IR by SG on 2025-01-23

N

0 1,000 2,000 Feet
(At original document size of 11x17)
1:24,000

Legend

- Proposed Substation
- Project Area



Notes

1. Coordinate System: NAD 1983 HARN WISCRS Sheboygan County Feet
2. Data Sources: Stantec, Esri, ATC, USGS, BLM
3. Background: USGS 7.5' Topographic Quadrangles





Figure No. 1

Title
Project Location and Topography

Client/Project 193710511
ATC
Plymouth Reliability Project

Project Location T15N, R21E; T14N, R20E; & T14N, R21E
T. of Lyndon, Mitchell, & Plymouth, Sheboygan Co., WI

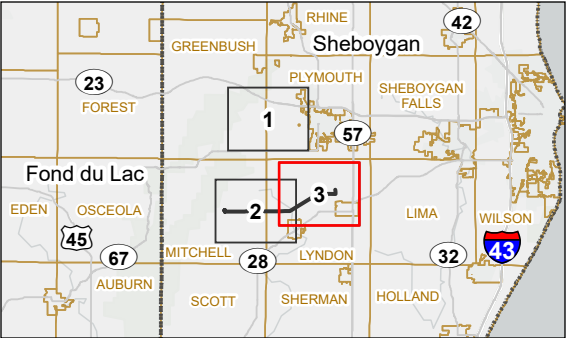
Prepared by MNK on 2025-01-23
TR by AJC on 2025-01-16
IR by SG on 2025-01-23

N

0 1,000 2,000 Feet
(At original document size of 11x17)
1:24,000

Legend

- Proposed Substation
- Project Area



Notes

1. Coordinate System: NAD 1983 HARN WISCRS Sheboygan County Feet
2. Data Sources: Stantec, Esri, ATC, USGS, BLM
3. Background: USGS 7.5' Topographic Quadrangles



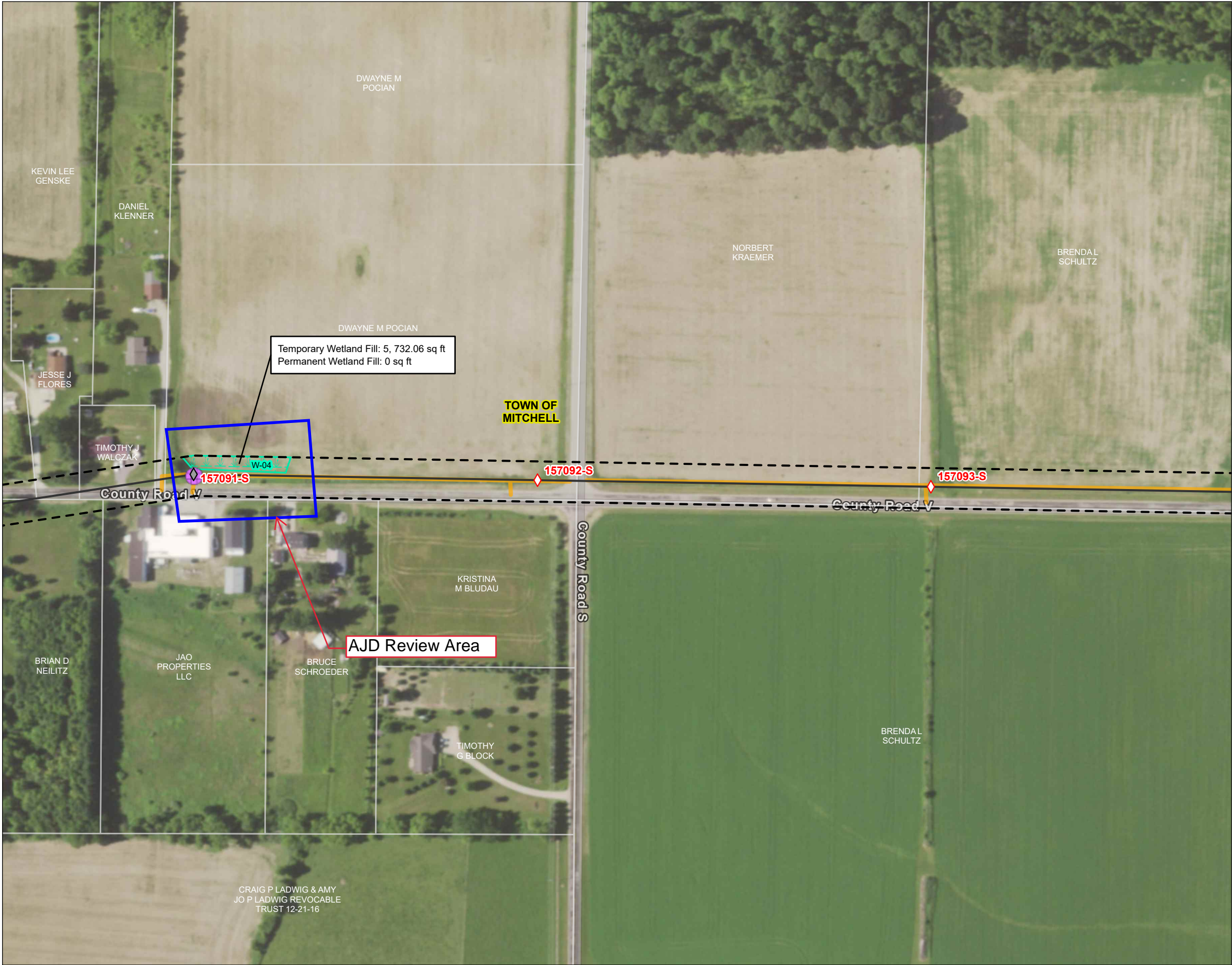


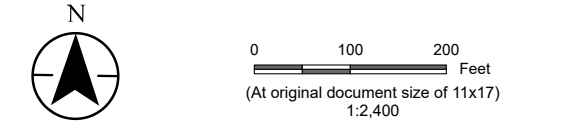
Figure No.
2
Title
Environmental Features

Client/Project
ATC
Plymouth Reliability Project

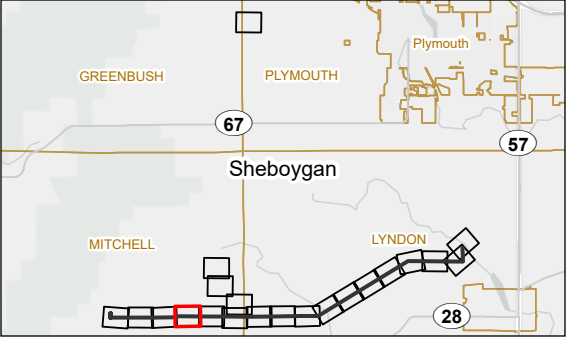
193710511

Project Location
T15N, R21E; T14N, R20E; & T14N, R21E
T. of Lyndon, Mitchell, & Plymouth, Sheboygan Co., WI

Prepared by MNK on 2025-01-23
TR by AJC on 2025-01-16
IR by SG on 2025-01-23



- Legend
- Existing Structure
 - Proposed Structure - Concrete Pier
 - Proposed Structure - Direct Embed
 - Proposed Substation
 - Proposed ATC Transmission Line
 - Project ROW
 - Parcel Boundary
 - Municipal Boundary
 - Temporary Clear Span Bridge
 - Mat Pads - Planned in Wetland
 - Matting - Planned in Wetland
 - Construction Access
 - Stringing Setup
 - Laydown Yards
 - Aerial Delineated Waterway
 - Field Delineated/Field Verified Wetland
 - Aerial Delineated Wetland
 - DNR 24k Hydrography
 - Perennial Stream
 - Intermittent Stream
 - Waterbody



Notes
1. Coordinate System: NAD 1983 HARN WISCRS Sheboygan County Feet
2. Data Sources: Stantec, Esri, ATC, USGS, BLM
3. Background: NAIP 2022



U:\gis_projects\193709608\03_data\gis_cad\APRXs\Plymouth SS DIC CPCN.aprx Revised: 2025-01-23 By: mkohls

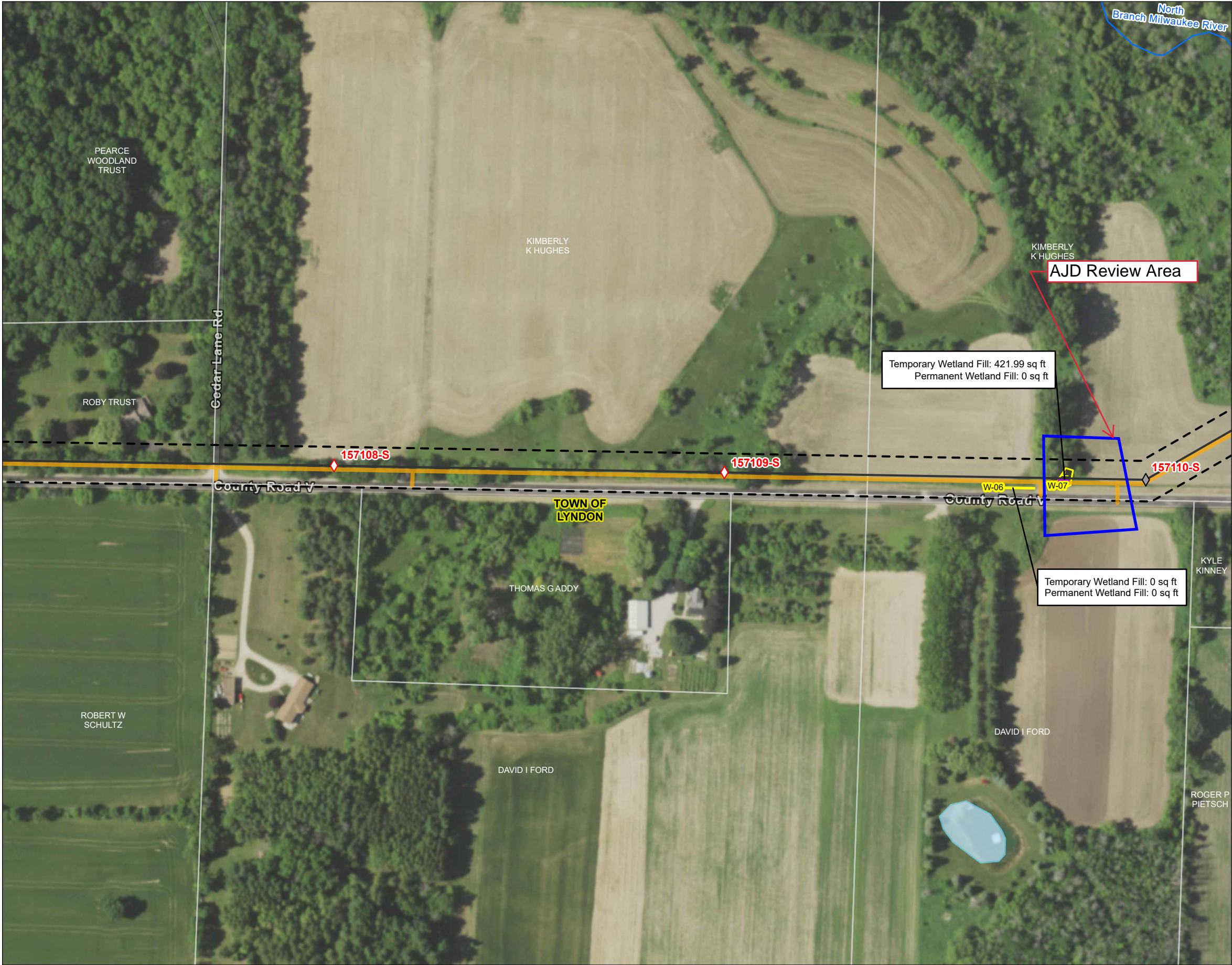


Figure No.
2
Title
Environmental Features

Client/Project
ATC
Plymouth Reliability Project

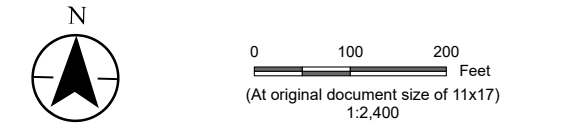
Project Location
T15N, R21E; T14N, R20E; & T14N, R21E
T. of Lyndon, Mitchell, & Plymouth, Sheboygan Co., WI

193710511

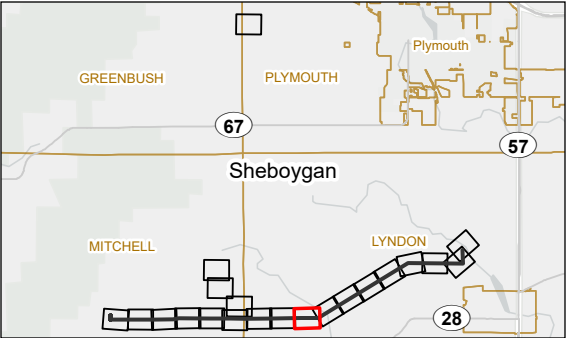
Prepared by MNK on 2025-01-23

TR by AJC on 2025-01-16

IR by SG on 2025-01-23



- Legend
- Existing Structure
 - Proposed Structure - Concrete Pier
 - Proposed Structure - Direct Embed
 - Proposed Substation
 - Proposed ATC Transmission Line
 - Project ROW
 - Parcel Boundary
 - Municipal Boundary
 - Temporary Clear Span Bridge
 - Mat Pads - Planned in Wetland
 - Matting - Planned in Wetland
 - Construction Access
 - Stringing Setup
 - Laydown Yards
 - Aerial Delineated Waterway
 - Field Delineated/Field Verified Wetland
 - Aerial Delineated Wetland
 - DNR 24k Hydrography
 - Perennial Stream
 - Intermittent Stream
 - Waterbody



Notes
1. Coordinate System: NAD 1983 HARN WISCRS Sheboygan County Feet
2. Data Sources: Stantec, Esri, ATC, USGS, BLM
3. Background: NAIP 2022



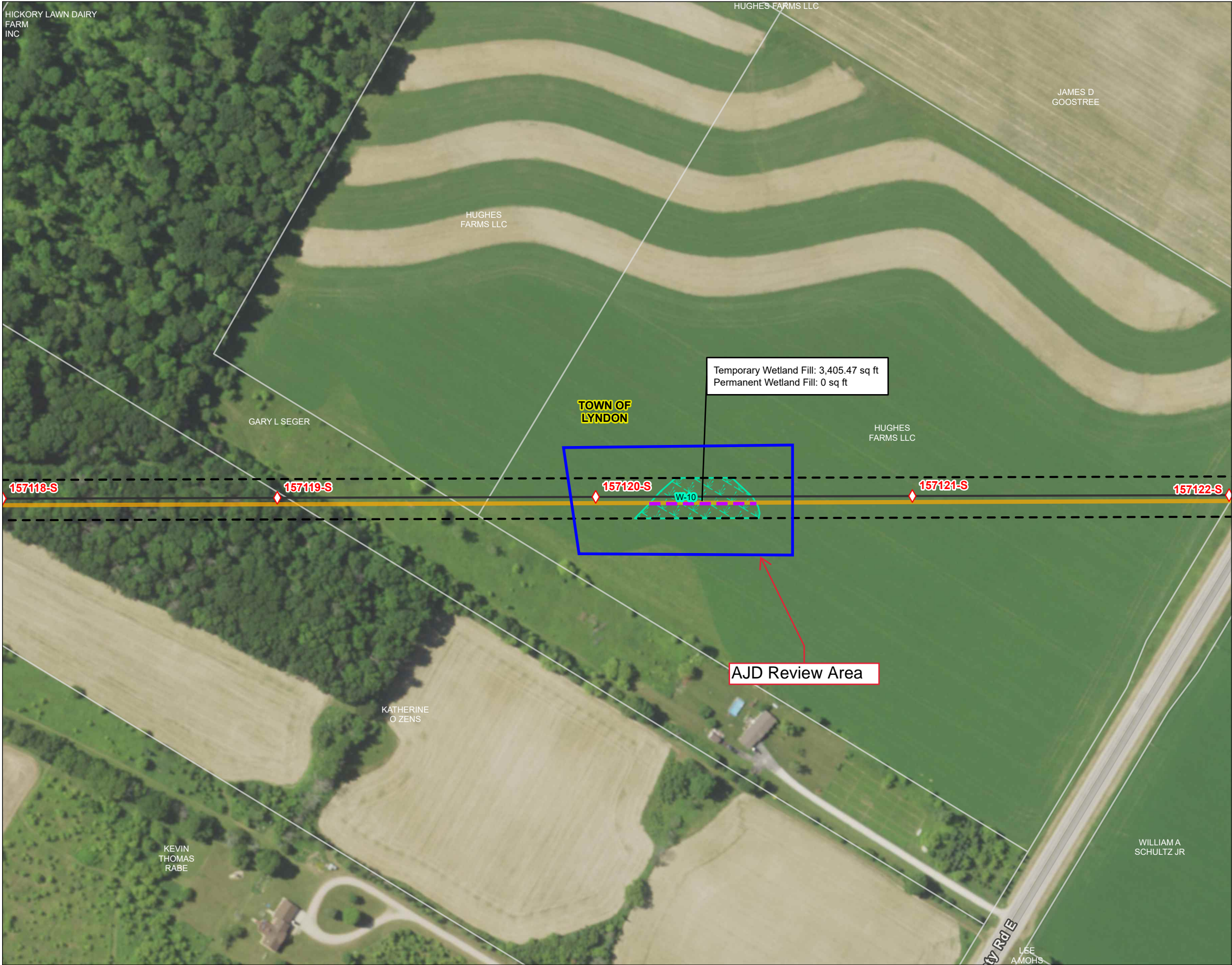
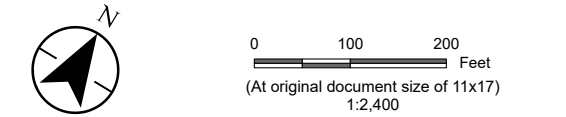


Figure No.
2
Title
Environmental Features

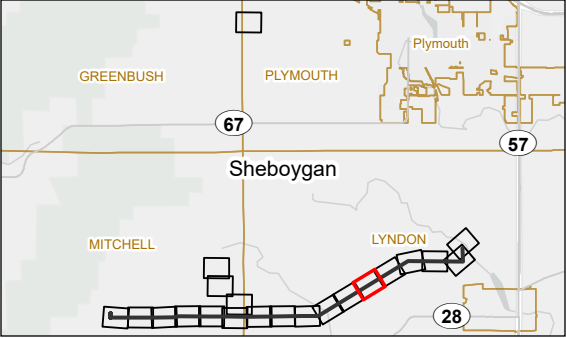
Client/Project
ATC
Plymouth Reliability Project

Project Location
T15N, R21E; T14N, R20E; & T14N, R21E
T. of Lyndon, Mitchell, & Plymouth, Sheboygan Co., WI

Prepared by MNK on 2025-01-23
TR by AJC on 2025-01-16
IR by SG on 2025-01-23



- Legend
- Existing Structure
 - Proposed Structure - Concrete Pier
 - Proposed Structure - Direct Embed
 - Proposed Substation
 - Proposed ATC Transmission Line
 - Project ROW
 - Parcel Boundary
 - Municipal Boundary
 - Temporary Clear Span Bridge
 - Mat Pads - Planned in Wetland
 - Matting - Planned in Wetland
 - Construction Access
 - Stringing Setup
 - Laydown Yards
 - Aerial Delineated Waterway
 - Field Delineated/Field Verified Wetland
 - Aerial Delineated Wetland
 - DNR 24k Hydrography
 - Perennial Stream
 - Intermittent Stream
 - Waterbody



Notes
1. Coordinate System: NAD 1983 HARN WISCRS Sheboygan County Feet
2. Data Sources: Stantec, Esri, ATC, USGS, BLM
3. Background: NAIP 2022



U:\gis_projects\193709608\03_data\gis_cad\APRXs\Plymouth SS DIC CPCN.aprx Revised: 2025-01-23 By: mkohlis



Figure No.
2

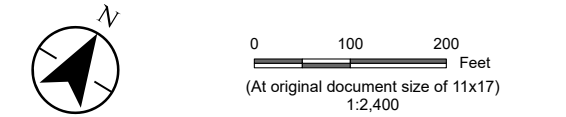
Title
Environmental Features

Client/Project
ATC
Plymouth Reliability Project

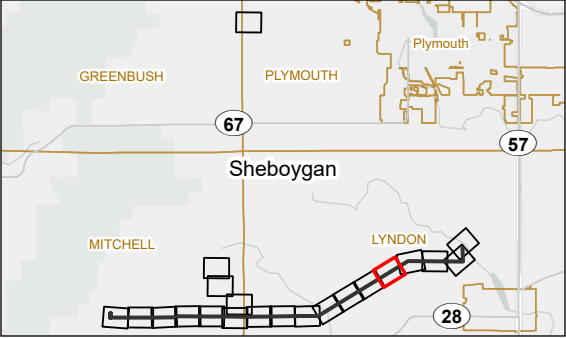
193710511

Project Location
T15N, R21E; T14N, R20E; & T14N, R21E
T. of Lyndon, Mitchell, & Plymouth, Sheboygan Co., WI

Prepared by MNK on 2025-01-23
TR by AJC on 2025-01-16
IR by SG on 2025-01-23



- Legend
- Existing Structure
 - Proposed Structure - Concrete Pier
 - Proposed Structure - Direct Embed
 - Proposed Substation
 - Proposed ATC Transmission Line
 - Project ROW
 - Parcel Boundary
 - Municipal Boundary
 - Temporary Clear Span Bridge
 - Mat Pads - Planned in Wetland
 - Matting - Planned in Wetland
 - Construction Access
 - Stringing Setup
 - Laydown Yards
 - Aerial Delineated Waterway
 - Field Delineated/Field Verified Wetland
 - Aerial Delineated Wetland
 - DNR 24k Hydrography
 - Perennial Stream
 - Intermittent Stream
 - Waterbody



Notes

- Coordinate System: NAD 1983 HARN WISCRS Sheboygan County Feet
- Data Sources: Stantec, Esri, ATC, USGS, BLM
- Background: NAIP 2022



U:\gis_projects\193709608\03_data\gis_cad\APRXs\Plymouth SS DIC CPCN.aprx Revised: 2025-01-23 By: mkohls

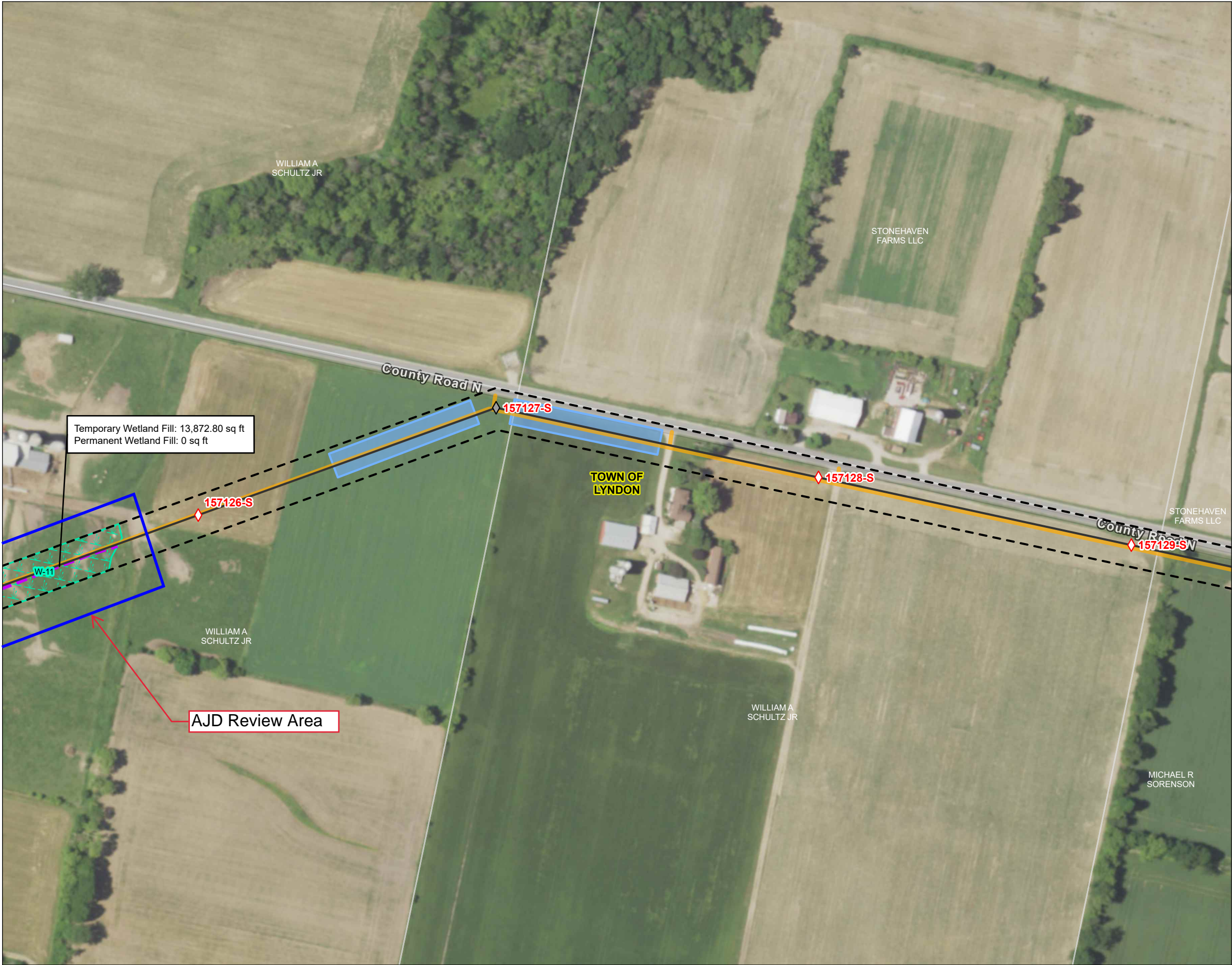


Figure No.
2

Title
Environmental Features

Client/Project
ATC
Plymouth Reliability Project

193710511

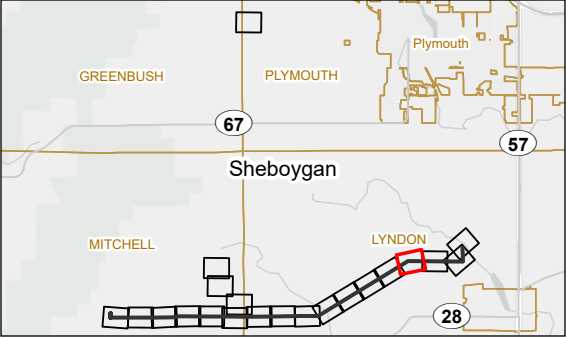
Project Location
T15N, R21E; T14N, R20E; & T14N, R21E
T. of Lyndon, Mitchell, & Plymouth, Sheboygan Co., WI

Prepared by MNK on 2025-01-23
TR by AJC on 2025-01-16
IR by SG on 2025-01-23

N

0 100 200 Feet
(At original document size of 11x17)
1:2,400

- Legend
- Existing Structure
 - Proposed Structure - Concrete Pier
 - Proposed Structure - Direct Embed
 - Proposed Substation
 - Proposed ATC Transmission Line
 - Project ROW
 - Parcel Boundary
 - Municipal Boundary
 - Temporary Clear Span Bridge
 - Mat Pads - Planned in Wetland
 - Matting - Planned in Wetland
 - Construction Access
 - Stringing Setup
 - Laydown Yards
 - Aerial Delineated Waterway
 - Field Delineated/Field Verified Wetland
 - Aerial Delineated Wetland
 - DNR 24k Hydrography
 - Perennial Stream
 - Intermittent Stream
 - Waterbody



Notes
1. Coordinate System: NAD 1983 HARN WISCRS Sheboygan County Feet
2. Data Sources: Stantec, Esri, ATC, USGS, BLM
3. Background: NAIP 2022



U:\gis_projects\193709608\03_data\gis_cad\APRXs\Plymouth SS DIC CPCN.aprx Revised: 2025-01-23 By: mkohls

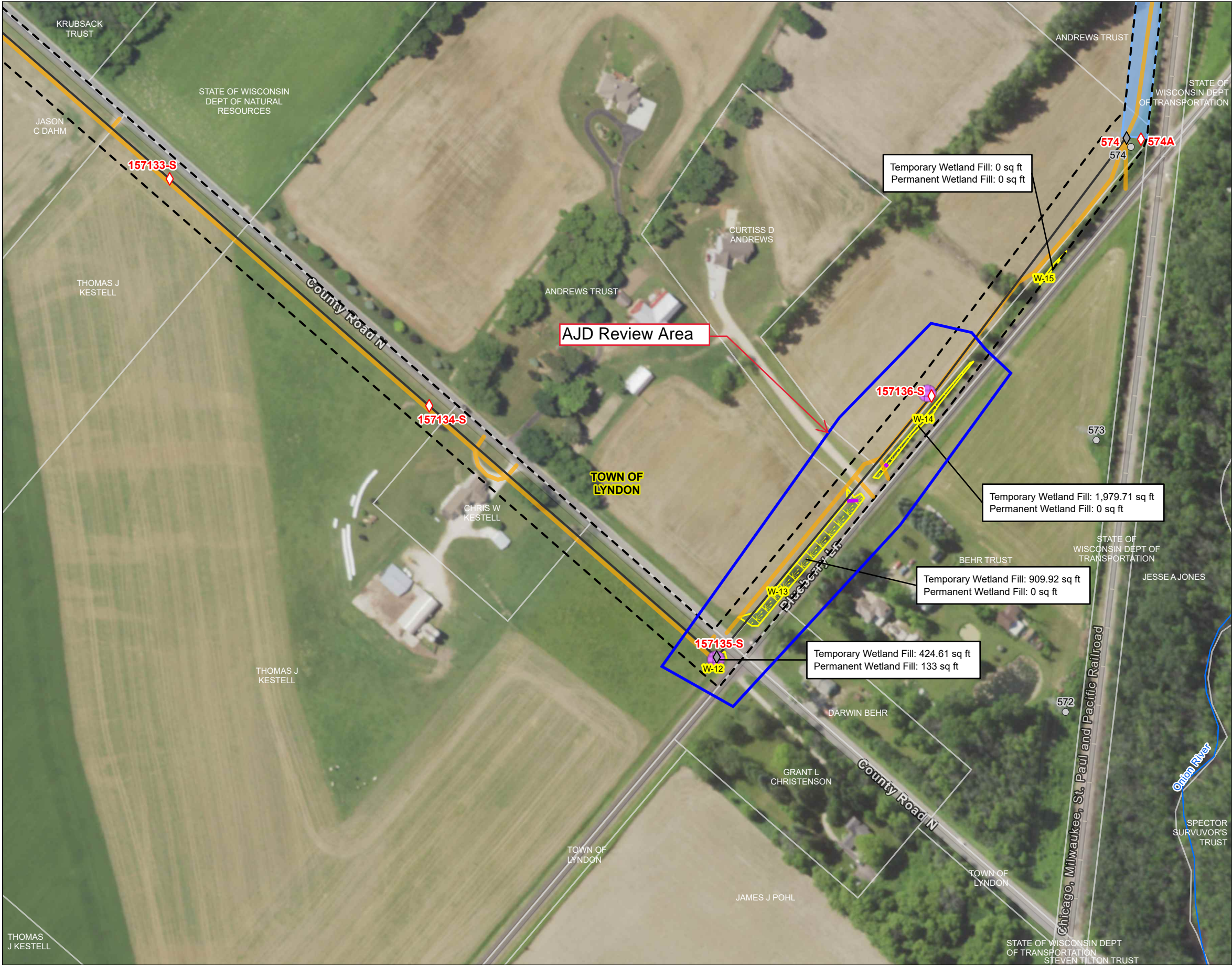
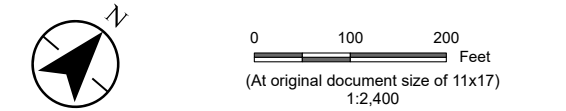


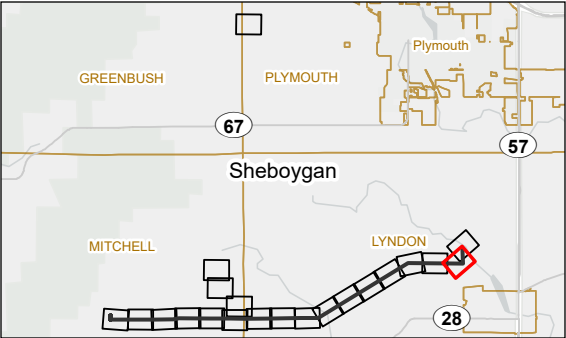
Figure No. 2
Title Environmental Features

Client/Project 193710511
ATC
Plymouth Reliability Project

Project Location T15N, R21E; T14N, R20E; & T14N, R21E
T. of Lyndon, Mitchell, & Plymouth, Sheboygan Co., WI
Prepared by MNK on 2025-01-23
TR by AJC on 2025-01-16
IR by SG on 2025-01-23



- Legend
- Existing Structure
 - Proposed Structure - Concrete Pier
 - Proposed Structure - Direct Embed
 - Proposed Substation
 - Proposed ATC Transmission Line
 - Project ROW
 - Parcel Boundary
 - Municipal Boundary
 - Temporary Clear Span Bridge
 - Mat Pads - Planned in Wetland
 - Matting - Planned in Wetland
 - Construction Access
 - Stringing Setup
 - Laydown Yards
 - Aerial Delineated Waterway
 - Field Delineated/Field Verified Wetland
 - Aerial Delineated Wetland
 - DNR 24k Hydrography
 - Perennial Stream
 - Intermittent Stream
 - Waterbody



Notes
1. Coordinate System: NAD 1983 HARN WISCRS Sheboygan County Feet
2. Data Sources: Stantec, Esri, ATC, USGS, BLM
3. Background: NAIP 2022



U:\gis_projects\193709608\03_data\gis_cad\APRXs\Plymouth SS DIC CPCN.aprx Revised: 2025-01-23 By: mkohls